

Parts List			
ITEM	QTY	PART #	DESCRIPTION
1	1	A02001	BASE
2	6	A02011	BEARING
3	4	A02014	ROD BOLT
4	4	A02028	VALVEBODY
5	2	A02033	BUSHING
6	4	A03001	CAP
7	1	A03003	CLAMP
8	1	A03004	CONNECTOR
9	2	A05002-250	ECCENTRIC
10	4	A06001	FOOT
11	1	A08001	HOUSING
12	1	A08010	HOUSING
13	4	A08040	HEAD
14	1	A13003	MOTOR
15	4	A14001	CAP NUT
16	4	A16001	PLATE
17	2	A16008	2nd STAGE
18	4	A18001	CONN. ROD
19	6	A18002	TOLERANCE RING
20	20	A19005	SCREW-HEAD/BASE
21	4	A19007	PLATE SCREW
22	2	A19008	SET SCREW
23	2	A19010	SET SCREW
24	8	A19013	VALVEBODY SCREW
25	8	A19031	2nd STAGE SCREW
26	2	A19050	SPRING PIN
27	4	A23004	WASHER
28	4	*A04012	DIAPHRAGM
29	4	*A07012	GASKET
30	8	*A15003	O-RING
31	8	*A22002	4-40 SCREW
32	8	*A22004	FLAPPER VALVE
33	4	*A22005	VALVE STOP
34	4	*A23001	WASHER

***RECOMMENDED SPARE PART KITS**

DIAPHRAGM KITS	
11012	TEFLON/EPDM
11014	3-PLY TEFLON

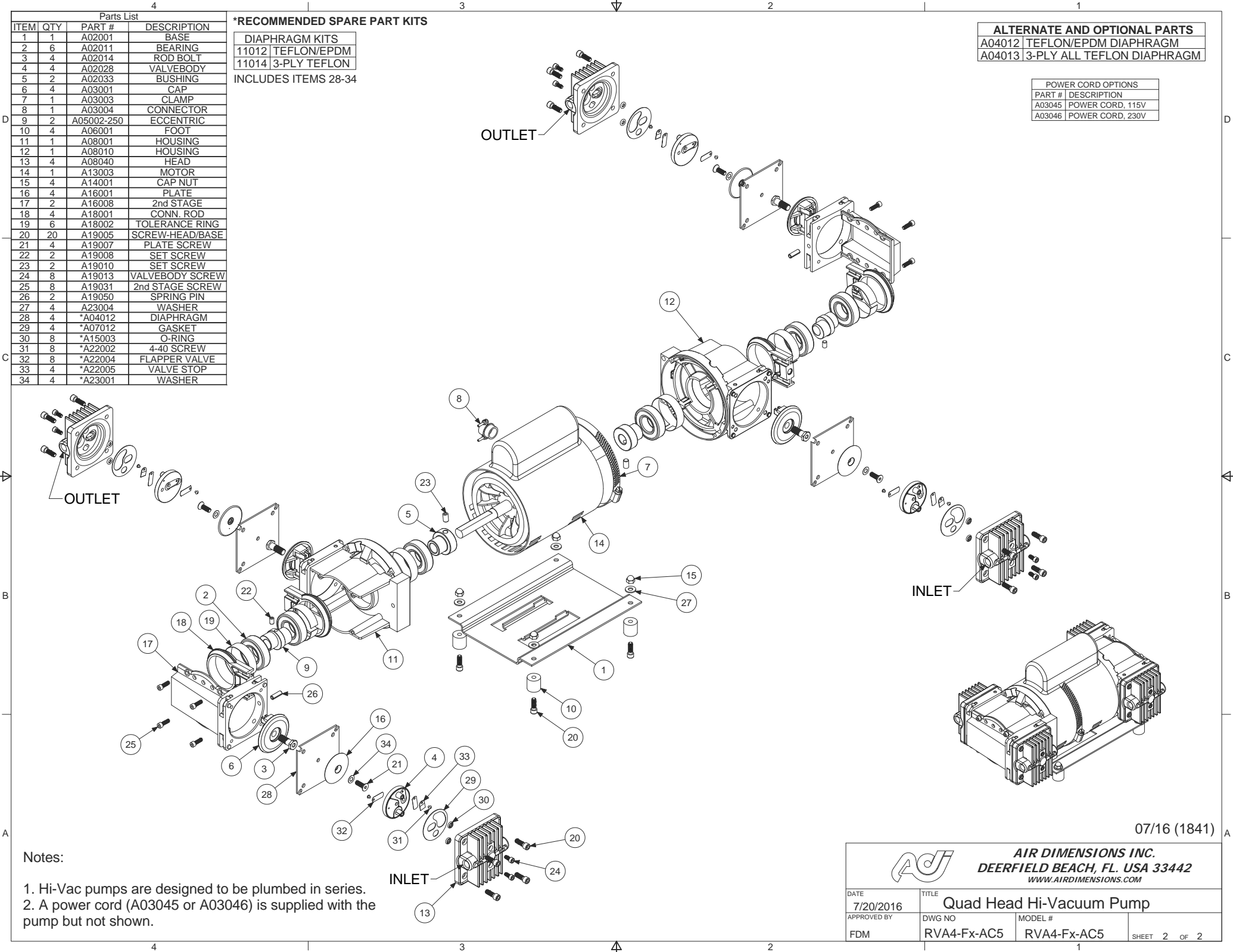
INCLUDES ITEMS 28-34

ALTERNATE AND OPTIONAL PARTS

A04012	TEFLON/EPDM DIAPHRAGM
A04013	3-PLY ALL TEFLON DIAPHRAGM

POWER CORD OPTIONS


PART #	DESCRIPTION
A03045	POWER CORD, 115V
A03046	POWER CORD, 230V



Notes:

1. Hi-Vac pumps are designed to be plumbed in series.
2. A power cord (A03045 or A03046) is supplied with the pump but not shown.

07/16 (1841)

 AIR DIMENSIONS INC. DEERFIELD BEACH, FL. USA 33442 WWW.AIRDIMENSIONS.COM			
DATE 7/20/2016	TITLE Quad Head Hi-Vacuum Pump		
APPROVED BY FDM	DWG NO RVA4-Fx-AC5	MODEL # RVA4-Fx-AC5	SHEET 2 OF 2