

Parts List

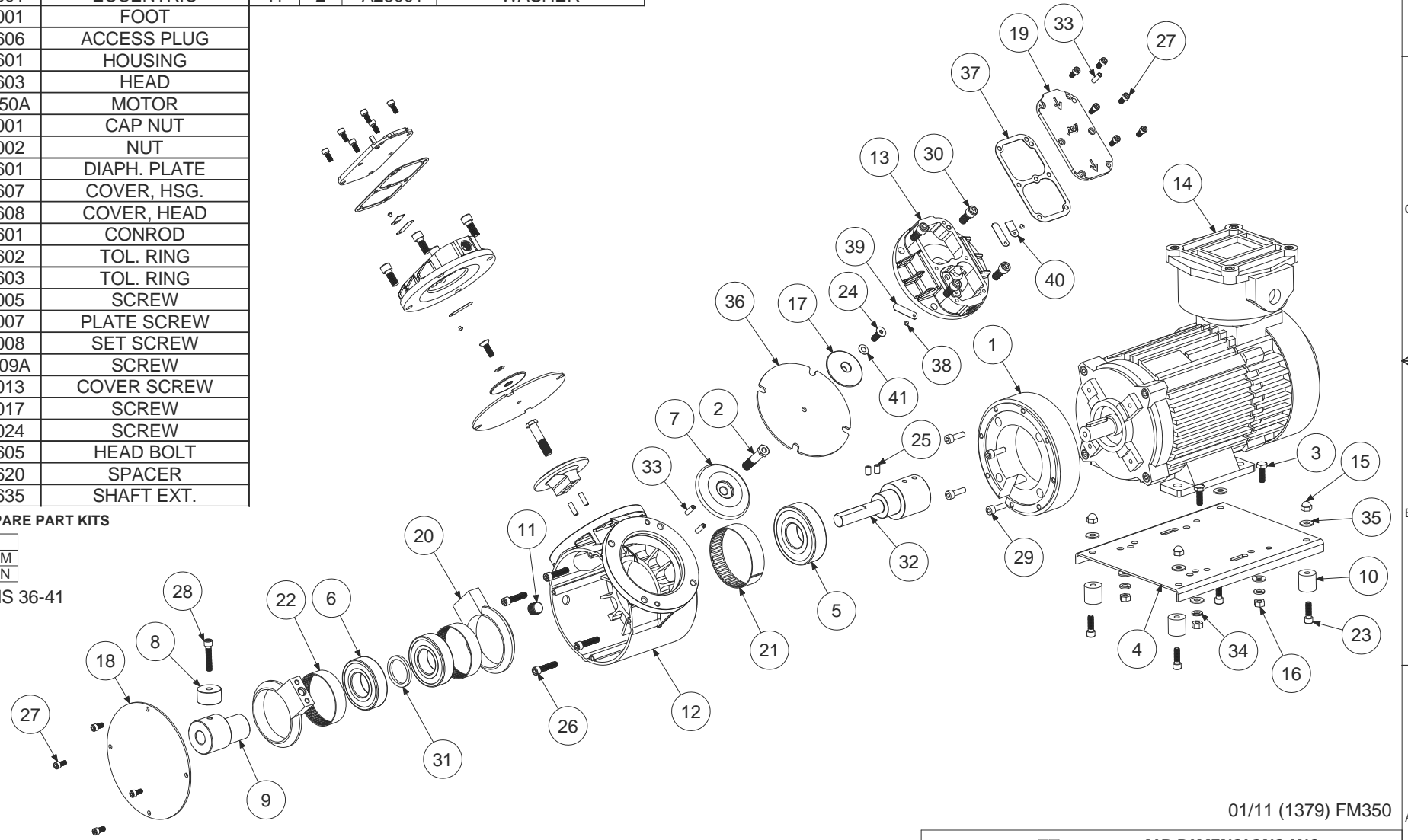
Parts List

ITEM	QTY	PART #	DESCRIPTION
1	1	A01645	ADAPTOR PLATE
2	2	A02017	ROD BOLT
3	4	A02018	BOLT-MOTOR
4	1	A02030	BASE
5	1	A02610	BEARING
6	2	A02611	BEARING
7	2	A03601	CAP HI PERF
8	1	A03602	COUNTERWEIGHT
9	1	A05601	ECCENTRIC
10	4	A06001	FOOT
11	1	A06606	ACCESS PLUG
12	1	A08601	HOUSING
13	2	A08603	HEAD
14	1	A13050A	MOTOR
15	4	A14001	CAP NUT
16	4	A14002	NUT
17	2	A16601	DIAPH. PLATE
18	1	A16607	COVER, HSG.
19	2	A16608	COVER, HEAD
20	2	A18601	CONROD
21	1	A18602	TOL. RING
22	2	A18603	TOL. RING
23	4	A19005	SCREW
24	2	A19007	PLATE SCREW
25	2	A19008	SET SCREW
26	4	A19009A	SCREW
27	16	A19013	COVER SCREW
28	1	A19017	SCREW
29	4	A19024	SCREW
30	8	A19605	HEAD BOLT
31	1	A19620	SPACER
32	1	A19635	SHAFT EXT.

ITEM	QTY	PART #	DESCRIPTION
33	6	A19651	ROLL PIN
34	4	A23002	LOCK WASHER
35	8	A23004	WASHER
36	2	*A04601	DIAPHRAGM
37	2	*A07601	GASKET
38	4	*A22002	4-40 SCREW
39	4	*A22601	VALVE
40	2	*A22605	VALVE STOP
41	2	*A23001	WASHER

ALTERNATE MOTORS

A13043 1/2 HP 50Hz 230/400 Volt 3 Phase
 A13050A 1/2 HP 50Hz 115/230 Volt 1 Phase




*RECOMMENDED SPARE PART KITS

DIAPHRAGM KITS	
11605	TEFLON/EPDM
11611	3-PLY TEFLON

INCLUDES ITEMS 36-41

01/11 (1379) FM350

ALTERNATE DIAPHRAGMS
 A04601 Teflon/EPDM Diaphragm
 A04611 All Teflon Diaphragm

		AIR DIMENSIONS INC. DEERFIELD BEACH, FL. USA 33442 <small>WWW.AIRDIMENSIONS.COM</small>	
		DbI Head ATEX H-Series Pump	
DATE 1/7/2011	APPROVED BY FDM	DWG NO H302-Fx-Fxx	MODEL # H302-Fx-Fxx
			SHEET 2 OF 2