

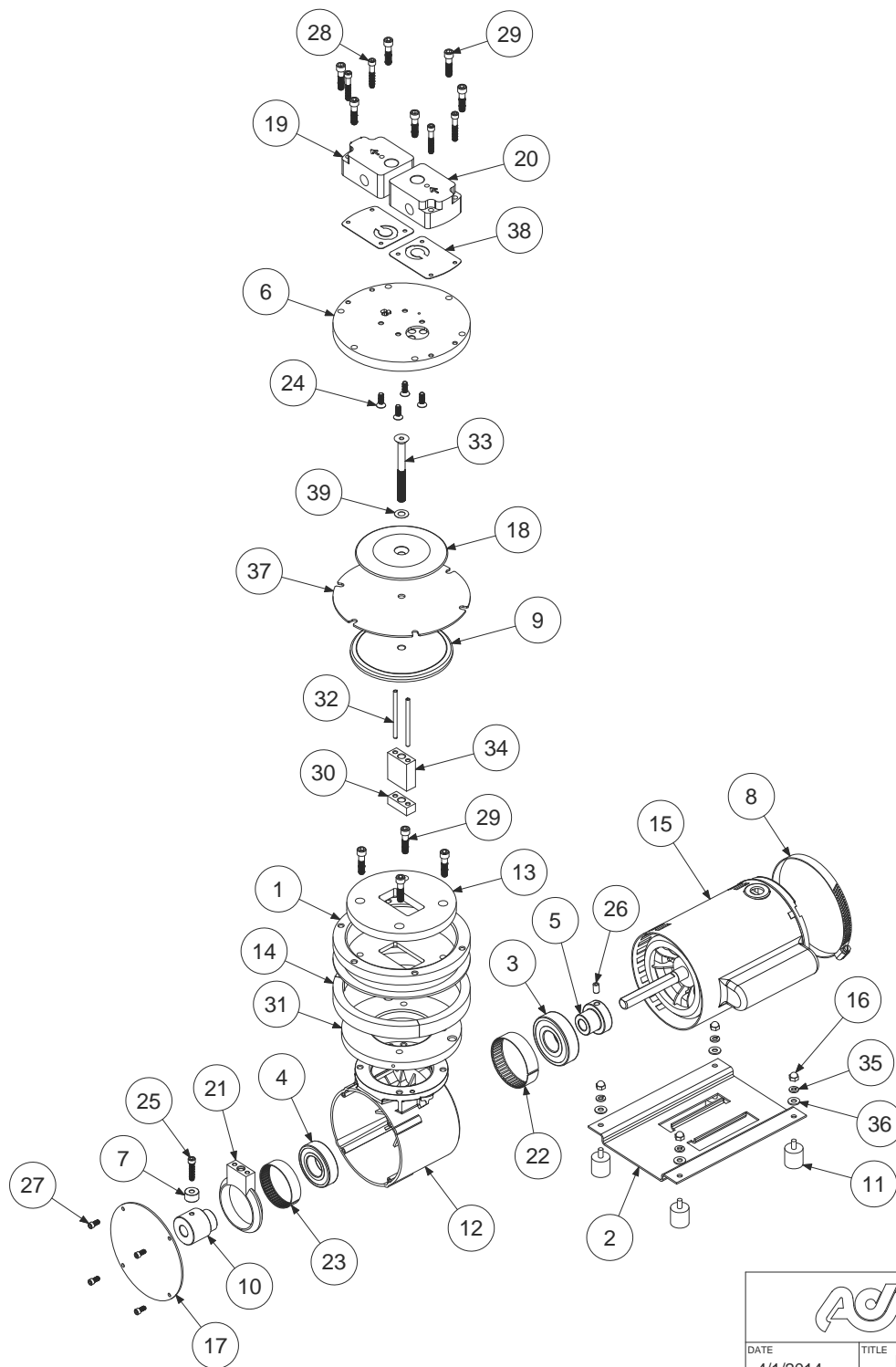
Parts List

ITEM	QTY	PART#	DESCRIPTION
1	1	A01830	ADAPTOR
2	1	A02001A	BASE
3	1	A02610	BEARING
4	1	A02612	BEARING
5	1	A02633	SHAFT BUSHING
6	1	A02805	VALVEBODY
7	1	A03002A	COUNTERWEIGHT
8	1	A03003	CLAMP
9	1	A03801	CAP
10	1	A05601A-250	ECCENTRIC
11	4	A06801	FOOT
12	1	A08602	HOUSING
13	1	A09801	INSULATION
14	1	A09802	INSULATION
15	1	A13603	MOTOR
16	4	A14001	CAP NUT
17	1	A16607	COVER PLATE
18	1	A16801	DIAPHRAGM PLATE
19	1	A16810	EXHAUST PORT
20	1	A16811	INTAKE PORT
21	1	A18601	CONROD
22	1	A18602	HSG. TOL. RING
23	1	A18603	CONROD TOL. RING
24	4	A19007	PORT SCREW
25	1	A19009A	CWGT. SCREW
26	1	A19010	SET SCREW
27	4	A19013	COVER SCREW
28	4	A19017A	PORT BOLT
29	10	A19604	VALVEBODY BOLT
30	1	A19623	CONROD SPACER
31	1	A19644	HSG. SPACER
32	2	A19652	ROLL PIN
33	1	A19807	PLATE SCREW
34	1	A19820	CONROD SPACER
35	4	A23002	LOCK WASHER
36	4	A23004	WASHER
37	1	*A04811	DIAPHRAGM
38	2	*A07801	VALVE GASKET
39	1	*A23801	WASHER

*RECOMMENDED SPARE PART KIT


DIAPHRAGM KIT
11811 3-PLY TEFLON

INCLUDES ITEMS 37-39



POWER CORD OPTIONS	
PART #	DESCRIPTION
A03019	HUBBLE CONNECTOR
A03045	POWER CORD, 115V
A03046	POWER CORD, 230V

02/17 (1891)

		AIR DIMENSIONS INC. DEERFIELD BEACH, FL. USA 33442 WWW.AIRDIMENSIONS.COM	
DATE	4/1/2014	TITLE	E-Series Pump
APPROVED BY	FDM	DWG NO	E251-FP-AC5
		MODEL #	E251-FP-AC5
			SHEET 2 OF 2