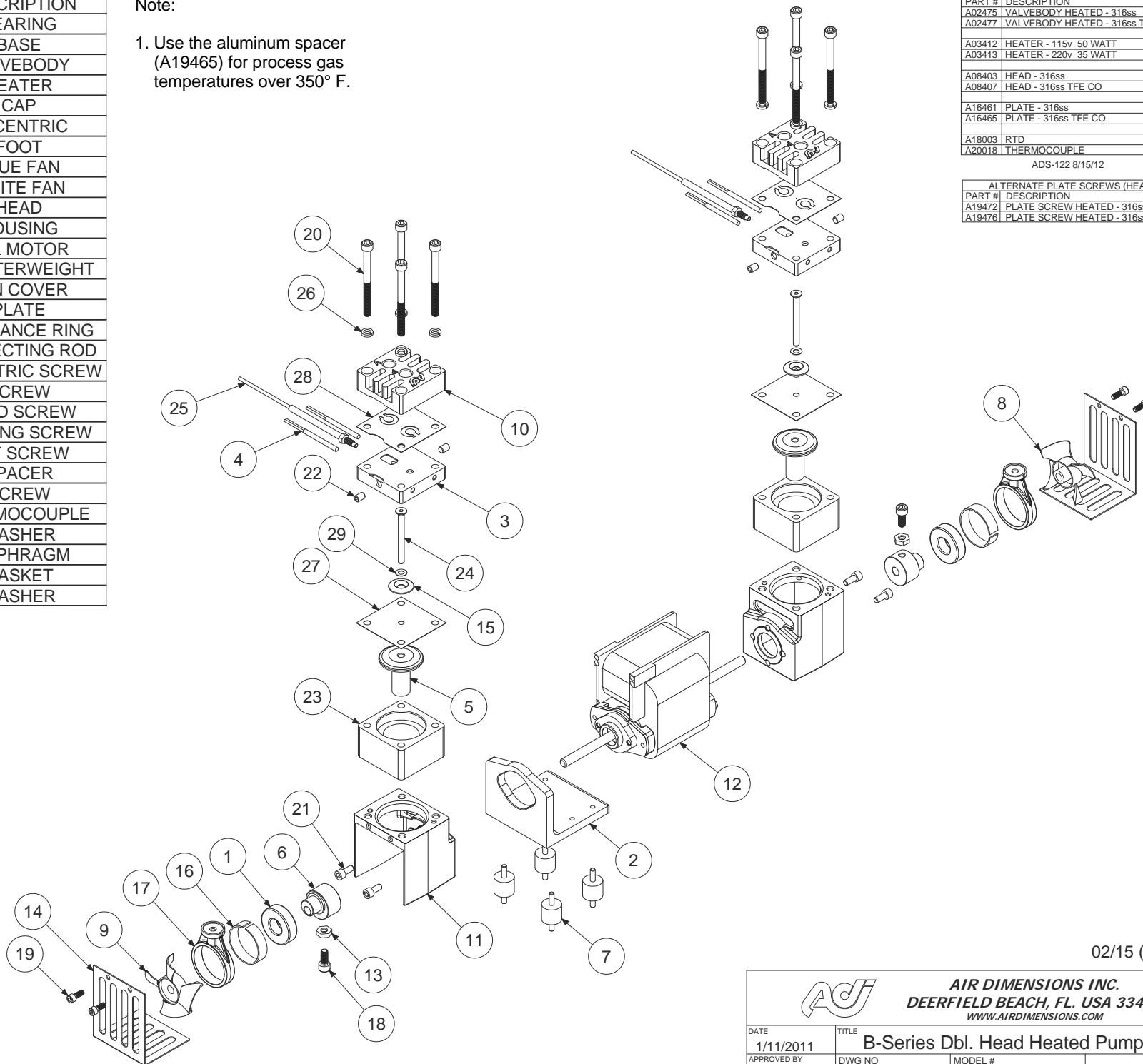


Parts List

ITEM	QTY	PART #	DESCRIPTION
1	2	A02411	BEARING
2	1	A02441A	BASE
3	2	A02475	VALVEBODY
4	4	A03412	HEATER
5	2	A03467	CAP
6	2	A05401	ECCENTRIC
7	4	A06401A	FOOT
8	1	A06443	BLUE FAN
9	1	A06444	WHITE FAN
10	2	A08403	HEAD
11	2	A08461	HOUSING
12	1	A13402	DBL MOTOR
13	2	A14401	COUNTERWEIGHT
14	2	A16407	FAN COVER
15	2	A16461	PLATE
16	2	A18402	TOLERANCE RING
17	2	A18461	CONNECTING ROD
18	2	A19013	ECCENTRIC SCREW
19	4	A19021	SCREW
20	8	A19405A	HEAD SCREW
21	4	A19419	HOUSING SCREW
22	4	A19428	SET SCREW
23	2	A19464	SPACER
24	2	A19476	SCREW
25	2	A20018	THERMOCOUPLE
26	8	A23402	WASHER
27	2	*A04461	DIAPHRAGM
28	2	*A07411	GASKET
29	2	*A23461	WASHER

Note:

1. Use the aluminum spacer (A19465) for process gas temperatures over 350° F.



ALTERNATE AND OPTIONAL PARTS	
PART #	DESCRIPTION
A02475	VALVEBODY HEATED - 316ss
A02477	VALVEBODY HEATED - 316ss TFE CO
A03412	HEATER - 115v 50 WATT
A03413	HEATER - 220v 35 WATT
A08403	HEAD - 316ss
A08407	HEAD - 316ss TFE CO
A16461	PLATE - 316ss
A16465	PLATE - 316ss TFE CO
A18003	RTD
A20018	THERMOCOUPLE
ADS-122 8/15/12	


ALTERNATE PLATE SCREWS (HEATED)	
PART #	DESCRIPTION
A19472	PLATE SCREW HEATED - 316ss TFE CO
A19476	PLATE SCREW HEATED - 316ss

\*RECOMMENDED SPARE PART KIT

DIAPHRAGM KIT
11461 2-PLY TEFLON

INCLUDES ITEMS 27-29

02/15 (1744)

		<b>AIR DIMENSIONS INC.</b> DEERFIELD BEACH, FL. USA 33442 WWW.AIRDIMENSIONS.COM	
DATE	1/11/2011	TITLE	B-Series Dbl. Head Heated Pump
APPROVED BY	FDM	DWG NO	Bxx2-xx-AC5-M
		MODEL #	Bxx2-xx-AC5-M
		SHEET 2 OF 2	