

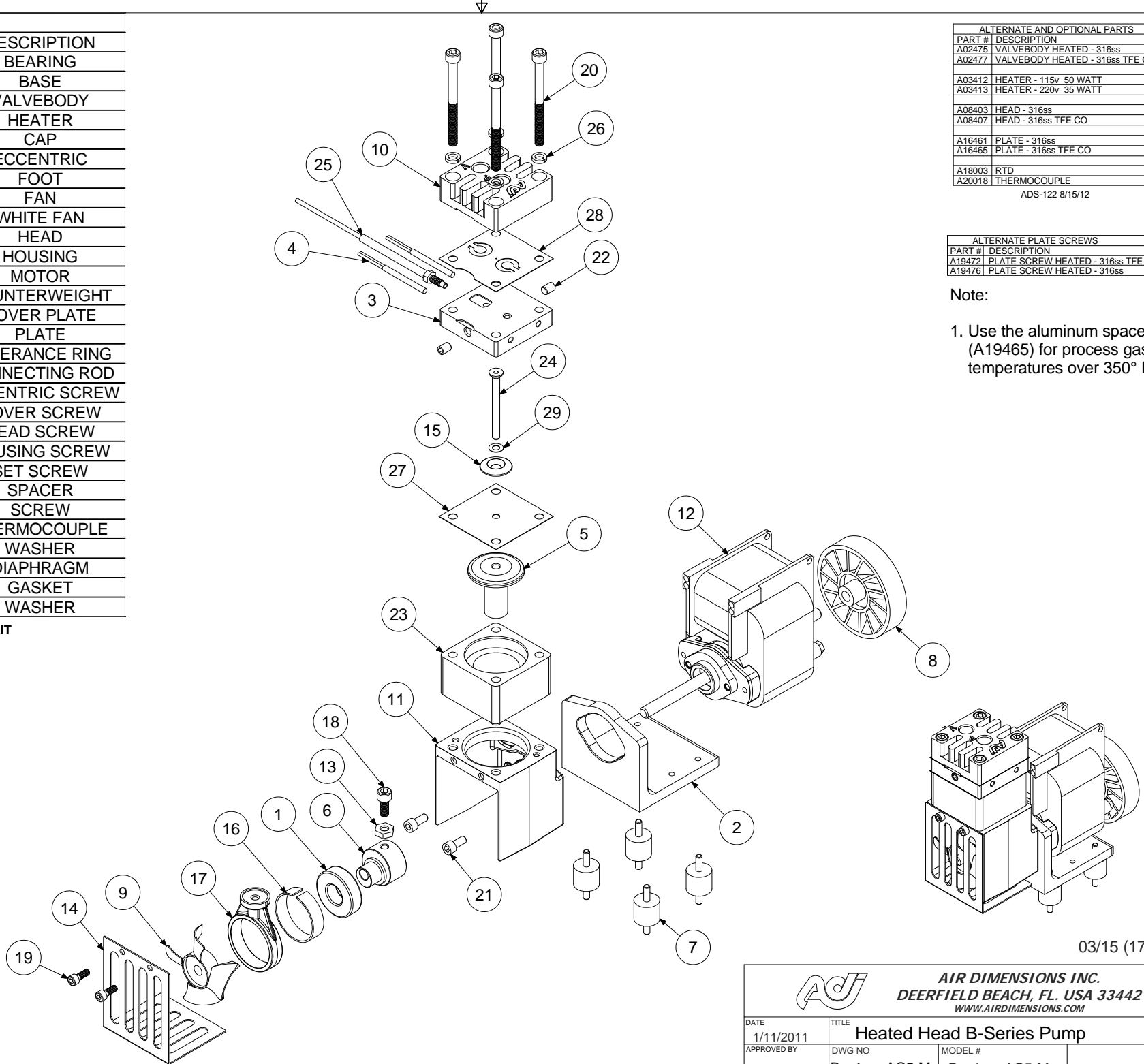
Parts List

ITEM	QTY	PART #	DESCRIPTION
1	1	A02411	BEARING
2	1	A02441A	BASE
3	1	A02475	VALVEBODY
4	2	A03412	HEATER
5	1	A03467	CAP
6	1	A05401	ECCENTRIC
7	4	A06401A	FOOT
8	1	A06403	FAN
9	1	A06444	WHITE FAN
10	1	A08403	HEAD
11	1	A08461	HOUSING
12	1	A13401	MOTOR
13	1	A14401	COUNTERWEIGHT
14	1	A16407	COVER PLATE
15	1	A16461	PLATE
16	1	A18402	TOLERANCE RING
17	1	A18461	CONNECTING ROD
18	1	A19013	ECCENTRIC SCREW
19	2	A19021	COVER SCREW
20	4	A19405A	HEAD SCREW
21	2	A19419	HOUSING SCREW
22	2	A19428	SET SCREW
23	1	A19464	SPACER
24	1	A19476	SCREW
25	1	A20018	THERMOCOUPLE
26	4	A23402	WASHER
27	1	*A04461	DIAPHRAGM
28	1	*A07411	GASKET
29	1	*A23461	WASHER

*RECOMMENDED SPARE PART KIT

DIAPHRAGM KIT
11461 2-PLY TEFLON

INCLUDES ITEMS 27-29



ALTERNATE AND OPTIONAL PARTS	
PART #	DESCRIPTION
A02475	VALVEBODY HEATED - 316ss
A02477	VALVEBODY HEATED - 316ss TFE CO
A03412	HEATER - 115v 50 WATT
A03413	HEATER - 220v 35 WATT
A08403	HEAD - 316ss
A08407	HEAD - 316ss TFE CO
A16461	PLATE - 316ss
A16465	PLATE - 316ss TFE CO
A18003	RTD
A20018	THERMOCOUPLE


ADS-122 8/15/12

ALTERNATE PLATE SCREWS	
PART #	DESCRIPTION
A19472	PLATE SCREW HEATED - 316ss TFE CO
A19476	PLATE SCREW HEATED - 316ss

Note:

1. Use the aluminum spacer (A19465) for process gas temperatures over 350° F.

03/15 (1745)

		AIR DIMENSIONS INC. DEERFIELD BEACH, FL. USA 33442 WWW.AIRDIMENSIONS.COM	
DATE	1/11/2011	TITLE	Heated Head B-Series Pump
APPROVED BY	FDM	DWG NO	Bxx1-xx-AC5-M
		MODEL #	Bxx1-xx-AC5-M
			SHEET 2 OF 2