

Parts List

ITEM	QTY	PART #	DESCRIPTION
1	1	A02411	BEARING
2	1	A02442B	BASE
3	1	A02465	VALVEBODY
4	1	A03461	CAP
5	1	A05402	ECCENTRIC
6	4	A06401A	FOOT
7	1	A08403	HEAD
8	1	A08461	HOUSING
9	1	A13431	MOTOR, 12V
10	1	A14401	COUNTERWEIGHT
11	1	A16407	COVER PLATE
12	1	A16461	PLATE
13	1	A18402	TOLERANCE RING
14	1	A18461	CONNECTING ROD
15	1	A19013	ECCENTRIC SCREW
16	2	A19021	SCREW
17	4	A19309	HEAD SCREW
18	2	A19419	HOUSING SCREW
19	4	A19420	SCREW
20	1	A19467	PLATE SCREW
21	4	A23402	WASHER
22	1	*A04461	DIAPHRAGM
23	1	*A07411	GASKET
24	1	*A23461	WASHER

\*RECOMMENDED SPARE PART KITS

DIAPHRAGM KITS	
11403	VITON
11461	2-PLY TEFLON

INCLUDES ITEMS 22-24

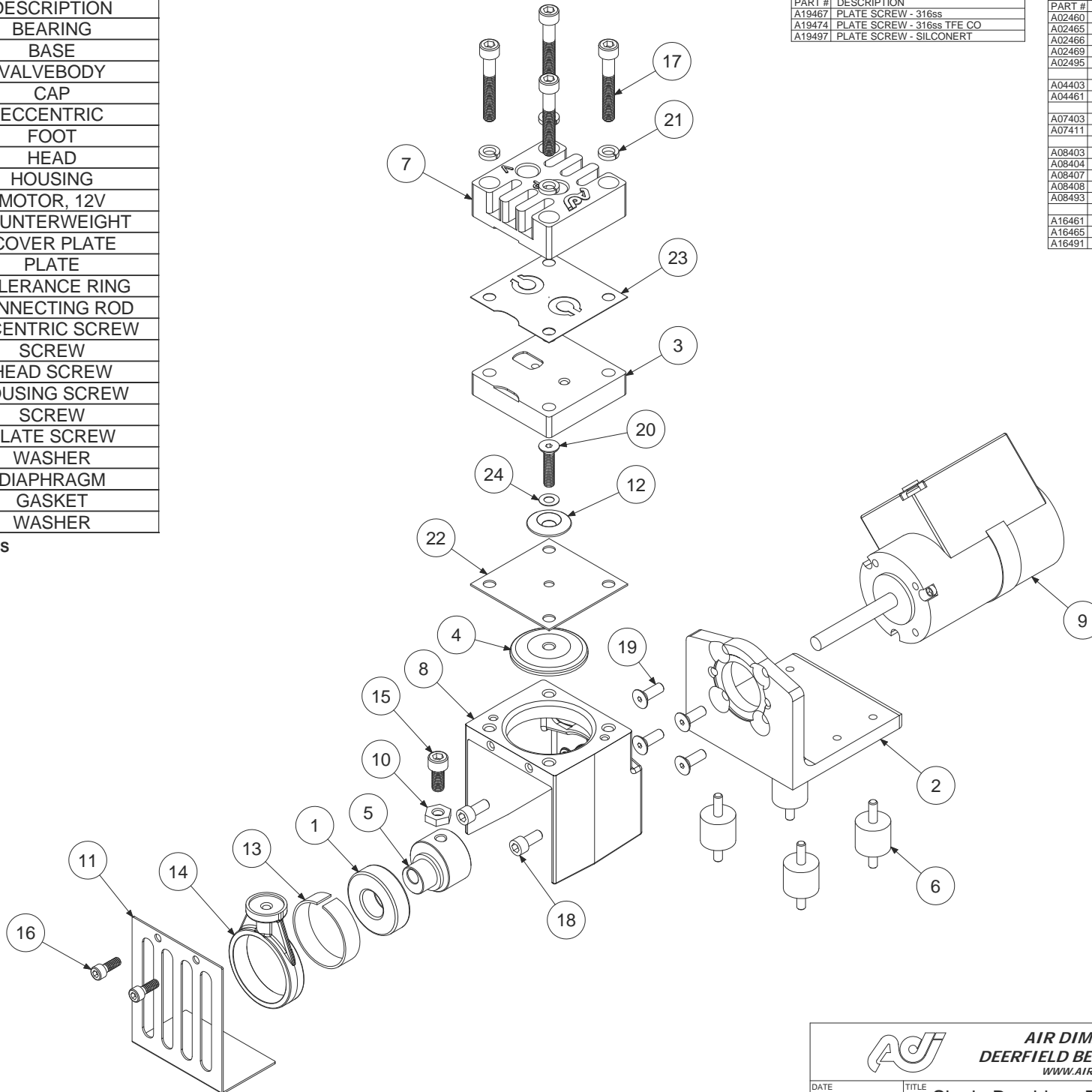
ALTERNATE MOTOR

A13432 24 volt DC

ALTERNATE PLATE SCREWS	
PART #	DESCRIPTION
A19467	PLATE SCREW - 316ss
A19474	PLATE SCREW - 316ss TFE CO
A19497	PLATE SCREW - SILCONERT

ALTERNATE AND OPTIONAL PARTS	
PART #	DESCRIPTION
A02460	VALVEBODY - ALUM TFE CO
A02465	VALVEBODY - 316ss
A02466	VALVEBODY - ALUM
A02469	VALVEBODY - 316ss TFE CO
A02495	VALVEBODY - SILCONERT
A04403	DIAPHRAGM - VITON
A04461	DIAPHRAGM - 2 PLY TEFLON
A07403	GASKET - VITON
A07411	GASKET - TEFLON
A08403	HEAD - 316ss
A08404	HEAD - ALUM
A08407	HEAD - 316ss TFE CO
A08408	HEAD - ALUM TFE CO
A08493	HEAD - SILCONERT
A16461	PLATE - 316ss
A16465	PLATE - 316ss TFE CO
A16491	PLATE - SILCONERT

ADS-121V 2/7/12



09/12 (1548) FM257

		<b>AIR DIMENSIONS INC.</b> DEERFIELD BEACH, FL. USA 33442 WWW.AIRDIMENSIONS.COM	
		DATE 4/26/2001	TITLE Single Brushless DC Micro
APPROVED BY FDM			SHEET 2 OF 2